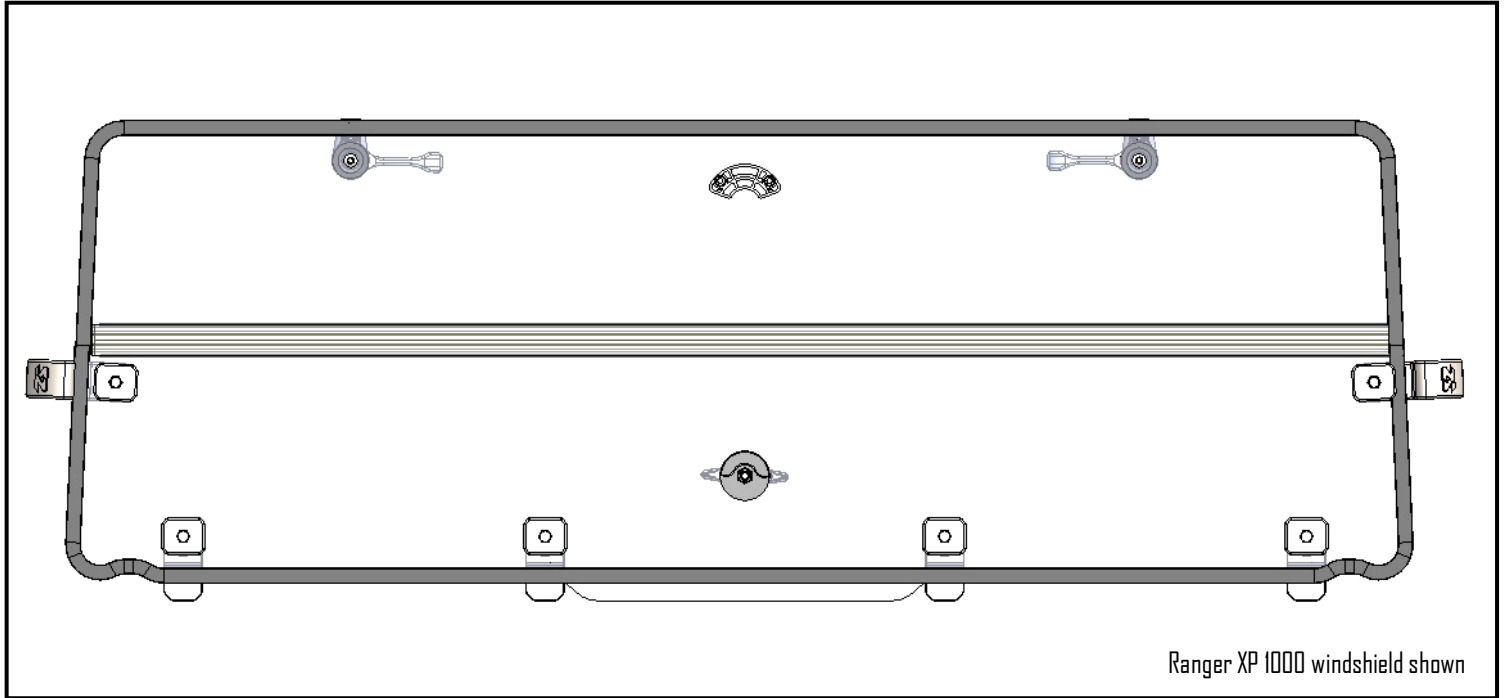




Installation & Operations Manual Folding Rear Windshield

Part Number
Ranger XP 1000 #32001
Can-Am Defender #32000



Kit Contents:

1. Assembled Windshield

Installation Information:

This product does not require any modifications to your vehicle. Please familiarize yourself with all the steps before beginning assembly.

Compatibility Info:

This windshield is designed to work with other Seizmik branded Accessories for the Polaris Ranger XP 1000 or Can-Am Defender as well as OEM hard tops. Please note Seizmik cannot guarantee fitment with other branded aftermarket products. Please research installation details on our products and others when trying to combine different branded accessories.

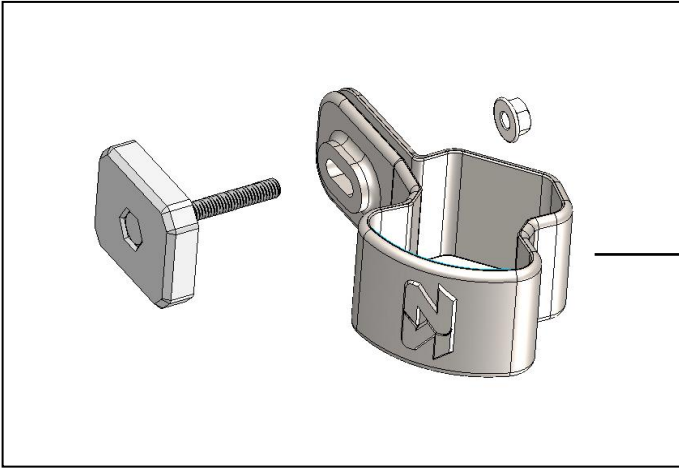
Seizmik makes Windshields, Mirrors, Door Kits, Light Bars, Hood Racks, and other great accessories for UTV's to maximize the vehicles usefulness. To help you do what you do better.

If you have any questions, comments, need assistance, or are missing parts, please call 1-866-838-3366 between 9:00AM and 5:00PM EST. Or email us at service@seizmik.com. Visit www.seizmik.com for more information on our products.

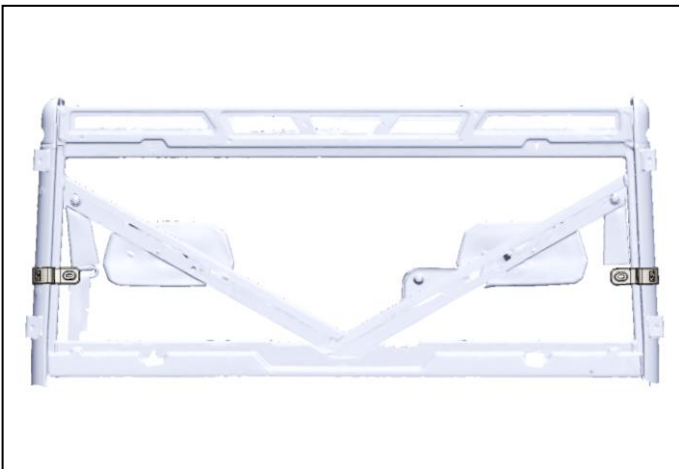
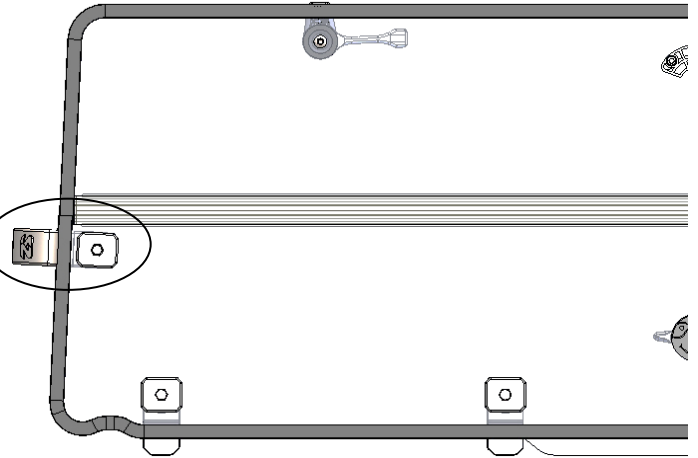
Installation:



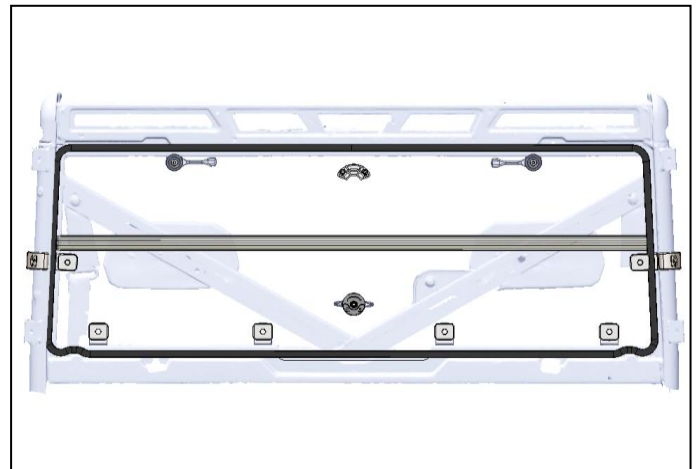
Note: The procedure is shown for Ranger XP 1000. Installation is similar for Can-Am Defender.



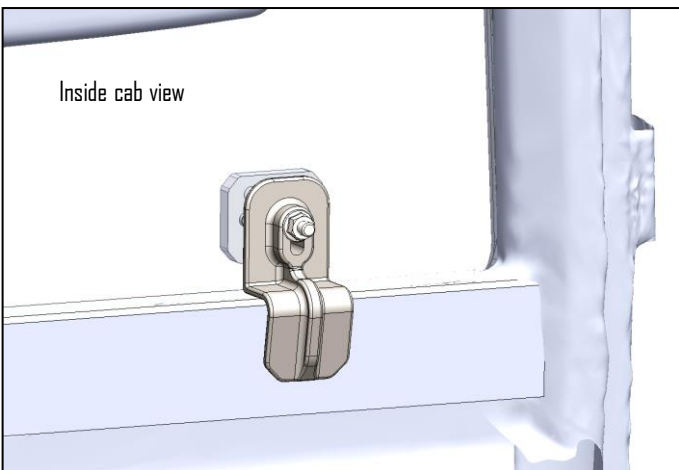
1. Remove clamp from either side of windshield.



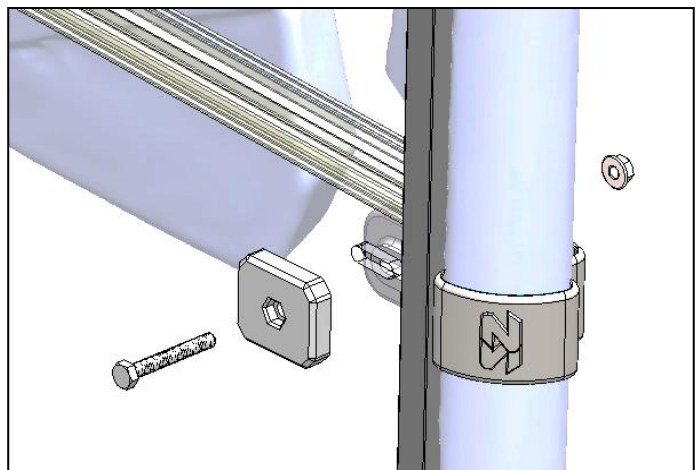
2. Place clamp around cage in approximate location shown so that the Seizmik logo faces vehicle bed. Be careful not to pinch fingers.



3. Assure that all 4 lower clamp bolts are loose. Place windshield against roll cage. Gasket bulb should be facing inward, towards cab.



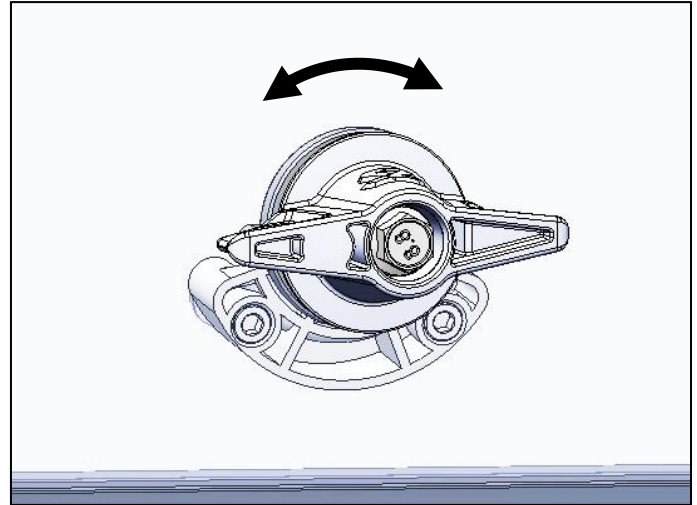
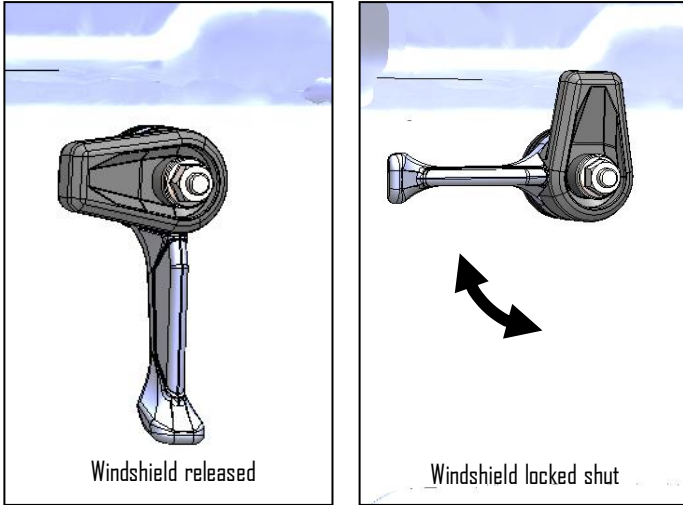
4. Lower clamps should fit snugly against roll cage.



5. Insert bolts through backing plates and windshield and loosely install nuts on side clamps. Center windshield and tighten all nuts.

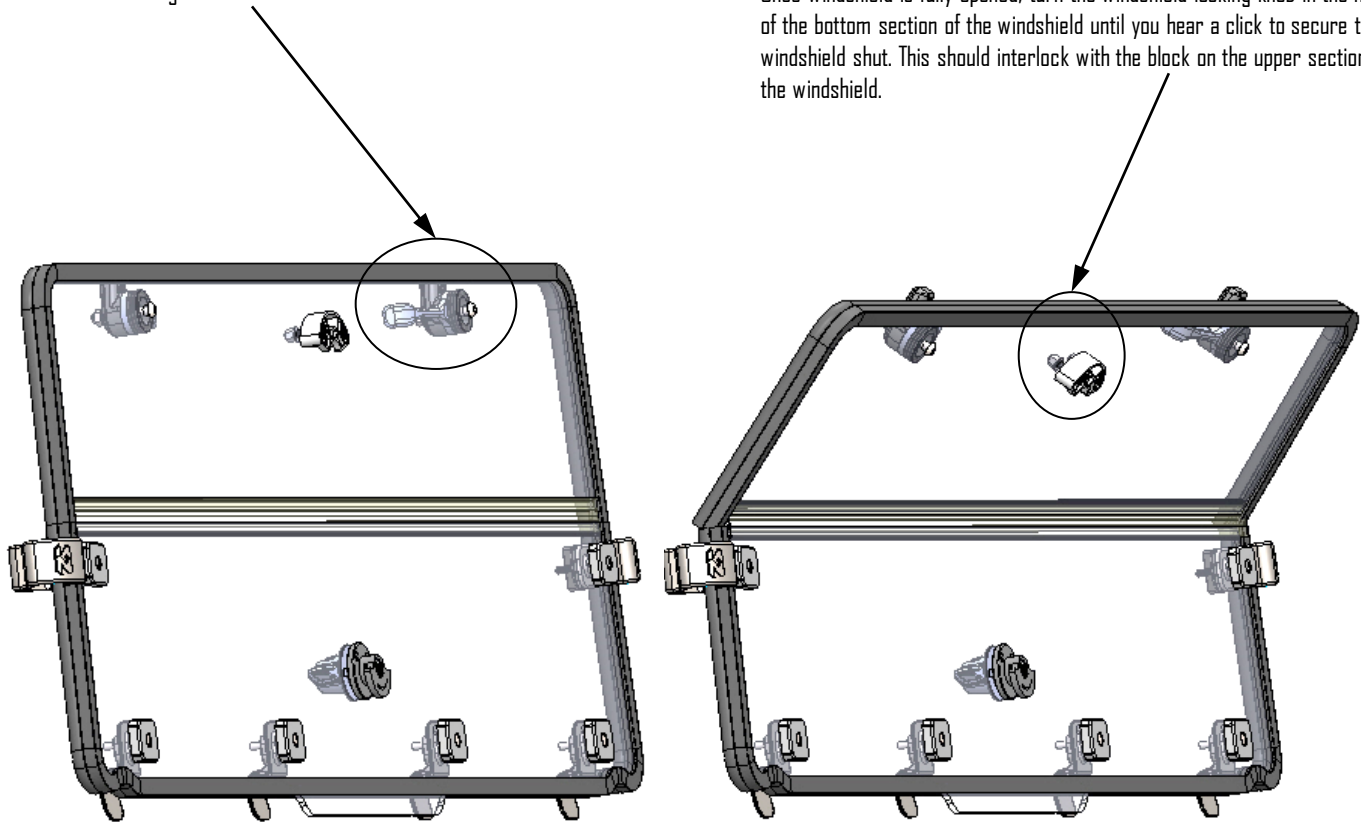
Operation:

Handles and knob can be made stiffer or looser by adjusting the nut in the middle of component.



Pull windshield shut using windshield lever. Turn handle to lock and release windshield.

Once windshield is fully opened, turn the windshield locking knob in the middle of the bottom section of the windshield until you hear a click to secure the windshield shut. This should interlock with the block on the upper section of the windshield.



Warranty Parts List:

